



# ACCON-EasyLog

## The fast and simple data logger

ACCON-EasyLog is excellently suited for reading and saving data from the PLC quickly and easily. This is possible either time-controlled or process-controlled. To detect deviations faster, ACCON-EasyLog provides a graphical representation of the data. Trends can be detected faster and you can respond immediately.

### Convincing and varied

ACCON-EasyLog has a modular design and offers you the possibility to choose between different input and output sources - exactly adapted to your situation. You have the choice of sending your data as CSV format, to an SQL database or to the Arburg guidance system (ALS) for archiving. Currently read process data are displayed directly in ACCON-EasyLog.

ACCON-EasyLog can read in the data from Siemens controllers with or without TIA as well as from SIMATIC controllers. For S7-200, S7-1200, S7-300, S7-400, S7-1500, LOGO! 0BA7 and LOGO! 0BA8 all common communication channels are supported. Communication with SIGMATEK controllers is possible via TCP/IP. ACCON-EasyLog supports the S7-1200/S7-1500 also with optimized block access and masters the import of symbols directly from the TIA Portal of versions 11 to 16.

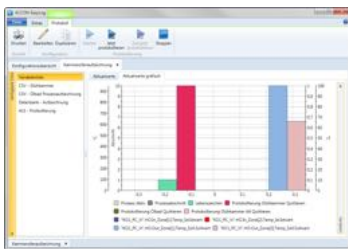
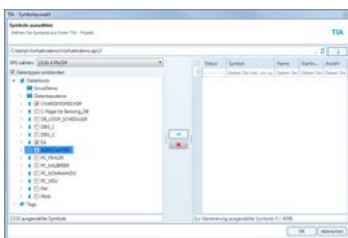
### Varied ranges of application

ACCON-EasyLog allows you to archive process data (as prescribed) for quality assurance and control. You can use a variety of data, e.g. for documentation of plant shutdowns or the temperatures of a cold store.

Major suppliers from the automotive industry have been using ACCON-EasyLog as a reliable and convenient solution in production for many years.

### Technical highlights

- Easy-to-use software
- Modular design - software tailored to your needs
- Supports Siemens controllers via MPI, PROFIBUS, PPI and TCP/IP
- Supports SIGMATEK controllers via TCP/IP
- Various output options (CSV, SQL, ALS, graphics)
- Supported SQL databases: MS SQL, MySQL, PostgreSQL, MariaDB, Oracle Database
- Prevention of data loss due to buffering when saving is not possible
- Multiple configurations can be used simultaneously
- Symbol import from TIA Portal projects (\*.ap11 to \*.ap16)
- Logging: time-controlled, event-controlled, when limit values are exceeded or tolerance bands are violated
- Software authorization and via USB dongle
- Further controls and connections available on request
- ACCON-AGLink implemented



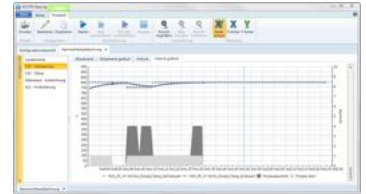
"We are very satisfied with ACCON-EasyLog. The data logger software offers all the functions we need and can therefore ideally be used as an interface for our general operational data acquisition."

# ACCON-EasyLog

## Technical details

|  |   |                           |            |
|--|---|---------------------------|------------|
| <b>Supported Operating Systems</b>           | Windows XP, 2008 R2, 7, 8.1, 10, 2012 R2, Server 2016   |                           |            |
| <b>Hardware requirements</b>                 | At least Pentium III 1.200 MHz, 1 GB RAM, 70 MB free hard disk space for software and sufficient hard disk space for log files                        |                           |            |
| <b>Supported PLCs</b>                        | S7-200, S7-1200, S7-1500, S7-300, S7-400, S7-400H (S7-300/400 compatible PLCs, e.g. Vipa, Saia, Berthel), LOGO! 0BA7, LOGO! 0BA8; SIGMATEK via TCP/IP |                           |            |
| <b>Max. number of supported PLCs</b>         | 32, expandable to 128   |                           |            |
| <b>Max. number of variables for each PLC</b> | 256, expandable to 1024 or 4096   |                           |            |
| <b>Supported communication channels</b>      |   |                           |            |
| <b>PLC interface</b>                         | <b>PC interface</b>   |                           |            |
|  | TCP/CP  | USB                       | Siemens CP |
| <b>S7-300/400/400H via MPI</b>               | ACCON-NetLink-PRO compact   | ACCON-NetLink-USB compact | +          |
| <b>S7-300/400/400H via PROFIBUS</b>          | ACCON-NetLink-PRO compact   | ACCON-NetLink-USB compact | +          |
| <b>S7-300/400/400H via TCP/IP (PN/IE)</b>    | +   | –                         | +          |
| <b>S7-1200/1500 via TCP/IP(PN/IE)</b>        | +   | –                         | –          |
| <b>S7-200 via PPI</b>                        | ACCON-NetLink-PRO compact   | ACCON-NetLink-USB compact | +          |
| <b>S7-200 via PROFIBUS</b>                   | ACCON-NetLink-PRO compact   | ACCON-NetLink-USB compact | +          |
| <b>S7-200 via TCP/IP</b>                     | +   | –                         | +          |
| <b>LOGO! 0BA7, LOGO!</b>                     | +   | –                         | –          |
| <b>SIGMATEK via TCP/IP</b>                   | +   | –                         | –          |

+ Possible without adapter  
– Not possible



“The import function of Step7 variables in the ACCON-EasyLog is outstanding.”

# ACCON-EasyLog



## Available modules

You have the choice and can configure your ACCON-EasyLog license exactly according to your needs. Besides the basic module you need at least one IN and one OUT module. The module OUT Graphic is only available in together with another OUT module. You can also extend your license with additional configurations or a higher number of available variables per configuration. Are you interested in further controllers or connections? Simply contact us by e-mail or via the contact form on our homepage.

|                       |  |
|-----------------------|--|
| <b>Basic module</b>   | ACCON-EasyLog basic module   |
| <b>INput modules</b>  | Module IN S7 classic for ACCON-EasyLog<br>Module IN S7 Sigmatek for ACCON-EasyLog<br>Module IN S7 TIA for ACCON-EasyLog                          |
| <b>OUTput modules</b> | Module OUT CSV for ACCON-EasyLog<br>Module OUT Graphic for ACCON-EasyLog<br>Module OUT ALS for ACCON-EasyLog<br>Module OUT SQL for ACCON-EasyLog |
| <b>Extensions</b>     | Module ACCON-EasyLog Cfg 64<br>Module ACCON-EasyLog Cfg 128<br>Module ACCON-EasyLog Var 1k<br>Module ACCON-EasyLog Var 4k                        |