

# Touch Screen Monitor



NODKA offers several series of Touch monitor products in different panel size, which are including 8",10.4",12.1",15",17",18.5",19" and 21.5", with 5-wire resistive and bezel free resistive touch screen, IR touch and Projected capacitive Click life screen for your choice, provides RS232 or USB touch interface, supports VGA,DVI or HDMI input, with VESA,Panel,Open frame and Rack mounting options.



**Rugged industrial grade design**  
Rugged metal box construction, aluminum front panel with IP65 compliant.

**Wide Work Temperature: -20°C~60°C**  
Product is with wide temperature components integrated, system operating temperature supports -20 up to +60°C, suitable for major industrial applications.

**Neutral front Panel**  
Neutral front panel design without logo, accept print logo service, as well as neutral packing optional.

**DC12V/24V Power input**  
DC 12V power input, optional DC24V, with surge power, over voltage and reverse polarity protection, with phoenix terminal contact.

**Flexible modular design**  
Display module option resistive touch,bezel free capacitive touch and bezel free resistive touch, box option XXX2, XXX3 and XXX4 system.

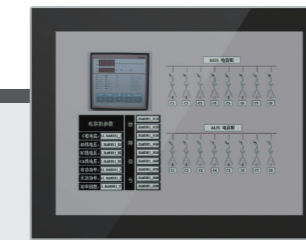
**Vaiour mounting options**  
Support Panel mounted and Wall mounted with VESA stand.

## Display module option:



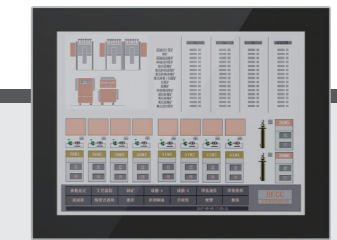
### PANEL5000-A Series

Resistive touch screen monitor, optional size: 8",10.4",12.1",15",17",19" and 21.5".



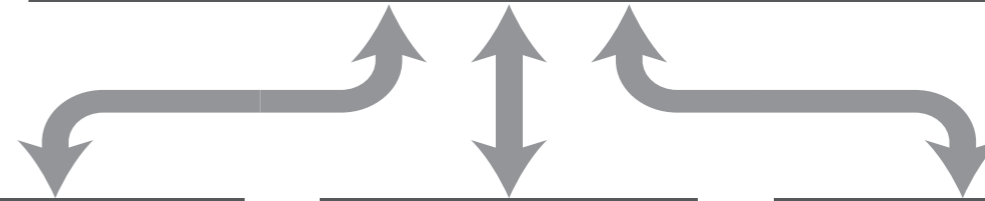
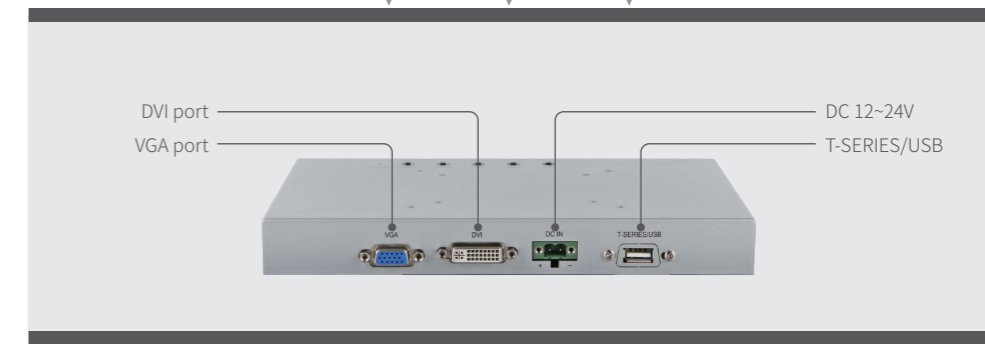
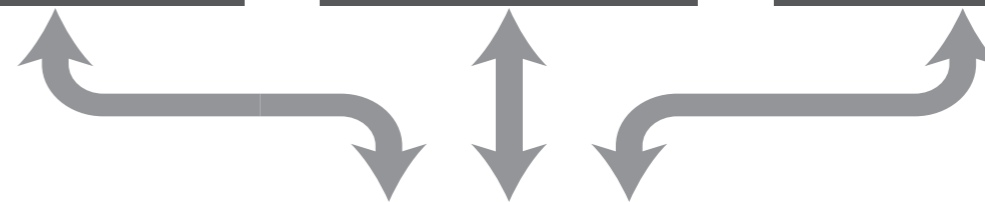
### PANEL5000-C Series

Capacitive touch screen monitor, optional size: 12.1",15",17",18.5",19" and 21.5".



### PANEL5000-D Series

Bezel free and resistive touch screen monitor, optional size: 12.1",15",17".



# PANEL5000-AXX2 SERIES



Model No.	PANEL5000-A082	PANEL5000-A102	PANEL5000-A122	
<b>General</b>	Control button	Set Contrast ratio and Luminance via OSD at the back panel		
	Dimension (W×H×D)	236mm×188mm×49.5mm (9.29"×7.40"×1.95")	300.5mm×234.5mm×50mm (11.83"×9.23"×1.97")	321mm×243mm×50mm (12.64"×9.57"×1.97")
	Drill Hole Size (W x H)	219mm×171mm (8.62"×6.73")	282mm×222mm (11.10"×8.74")	304mm×230mm (11.97"×9.06")
	Box structure	Front panel: aluminum-magnesium alloy, anodized coating ;Back cover: SGCC, Ground isolation protection		
	Mounting	Support Embedded,wall-mounted,Desktop and VESA mounting		
	Power Supply	Phoenix terminal: DC 12~24V input		
	Power Dissipation	5W	5W	8W
	Signal input	VGA & DVI-D		
	Net Weight	1.50kg (3.31lb)	2.50kg (5.51lb)	2.86kg (6.31lb)
<b>LCD</b>	LCD Type	8" SVGA TFT	10.4" SVGA TFT	12.1" XGA TFT
	Resolution	800×600	800×600	1024×768
	Colors	16.7MB	16.2MB	16.7MB
	Active Area (W×H)	162mm×121.5mm (6.38"×4.78")	211.2mm×158.4mm (8.31"×6.24")	246mm×184mm (9.69"×7.24")
	Backlight	WLED	WLED	WLED
	MTBF (hour)	30000hrs	30000hrs	30000hrs
	Pixel Pitch (H×V)	0.2025×0.2025	0.264×0.264	0.240×0.240
	Luminance	250cd/m <sup>2</sup>	350cd/m <sup>2</sup>	350cd/m <sup>2</sup>
	Contrast Ratio	500 : 1	800 : 1	800 : 1
Viewing Angle	(L) 75 / (R) 75 / (T) 75 / (B) 75	(L) 80 / (R) 80 / (T) 65 / (B) 75	(L) 80 / (R) 80 / (T) 80 / (B) 80	
<b>Touchscreen</b>	Touchscreen type	Resistive touch screen		
	Resolution	4096×4096		
	Transmittance	> 75%		
	Controller interface	USB		
	Driver Support	Windows 7, Windows8, Windows10, Linux		
	Response Time (touch Pen)	< 5ms		
	Surface Hardness	Mohs' Hardness 3H		
	Click Life	250g / 35,000,000 times		
	Draw life	250g / 5,000,000 times		
<b>Environmental</b>	Work Temperature	-20 ~ 60°C (-4~140°F)(Wide temperature SSD) / 0 ~ 45°C (32~113°F)(General temperature HDD/SSD)		
	Storage Temperature	-30 ~ 80°C (-22~176°F)		
	Relative Humidity	5 ~ 95% RH@40°C (Non-condensation)		
	Vibration	Operating Random Vibration Test 5~500Hz, 1.5Grms@with SSD, follow IEC 60068-2-64		
	Shock	Operating 20G peak acceleration (11ms duration), follow IEC 60068-2-27		
	EMC	CE/FCC Class B		
	Water-proof	Front panel IP65		



Model No.	PANEL5000-A152	PANEL5000-A172	PANEL5000-A192	PANEL5000-A2152
<b>General</b>	Set Contrast ratio and Luminance via OSD at the back panel			
	395mm×313mm×54mm (15.55"×12.32"×2.13")	434mm×342mm×54mm (17.09"×13.46"×2.13")	466mm×370mm×53mm (18.35"×14.57"×2.09")	550mm×342mm×60mm (21.65"×13.46"×2.36")
	376mm×300mm (14.80"×11.81")	411mm×325mm (16.18"×12.80")	443mm×352mm (17.44"×13.86")	533mm×325mm (20.98"×12.80")
	Front panel: aluminum-magnesium alloy, anodized coating ;Back cover: SGCC, Ground isolation protection			
	Support Embedded,wall-mounted,Desktop and VESA mounting			
	Phoenix terminal: DC 12~24V input			
	10W	12W	14W	17W
	VGA & DVI-D			
	4.10kg (9.04lb)	5.00kg (11.02lb)	5.82kg (12.83lb)	7.02kg (15.48lb)
<b>LCD</b>	15" XGA TFT	17" SXGA TFT	19" SXGA TFT	21.5" Full HD TFT
	1024×768	1280×1024	1280×1024	1920×1080
	16.2MB	16.7MB	16.7MB	16.7MB
	304mm×228mm (11.97"×8.98")	338mm×270mm (13.31"×10.63")	376.3mm×301mm (14.81"×11.85")	476mm×268mm (18.74"×10.55")
	WLED	WLED	WLED	WLED
	50000hrs	50000hrs	30000hrs	50000hrs
	0.297×0.297	0.264×0.264	0.294×0.294	0.248×0.248
	350cd/m <sup>2</sup>	350cd/m <sup>2</sup>	250cd/m <sup>2</sup>	250cd/m <sup>2</sup>
	700 : 1	1000 : 1	1000 : 1	1000 : 1
(L) 80 / (R) 80 / (T) 80 / (B) 80	(L) 85 / (R) 85 / (T) 80 / (B) 80	(L) 85 / (R) 85 / (T) 80 / (B) 80	(L) 89 / (R) 89 / (T) 89 / (B) 89	
<b>Touchscreen</b>	Resistive touch screen			
	4096×4096			
	> 75%			
	USB			
	Windows 7, Windows8, Windows10, Linux			
	< 5ms			
	Mohs' Hardness 3H			
	250g / 35,000,000 times			
	250g / 5,000,000 times			
<b>Environmental</b>	-20 ~ 60°C (-4~140°F)(Wide temperature SSD) / 0 ~ 45°C (32~113°F)(General temperature HDD/SSD)			
	-30 ~ 80°C (-22~176°F)			
	5 ~ 95% RH@40°C (Non-condensation)			
	Operating Random Vibration Test 5~500Hz, 1.5Grms@with SSD, follow IEC 60068-2-64			
	Operating 20G peak acceleration (11ms duration), follow IEC 60068-2-27			
	CE/FCC Class B			
	Front panel IP65			

# PANEL5000-CXX2 SERIES



Model No.	PANEL5000-C122	PANEL5000-C152	PANEL5000-C172	
<b>General</b>	Control button	Set Contrast ratio and Luminance via OSD at the back panel		
	Dimension (W×H×D)	321mm×247mm×47mm (12.64"×9.72"×1.85")	371mm×295mm×47mm (14.60"×11.61"×1.85")	428mm×342mm×47mm (16.85"×13.46"×1.85")
	Drill Hole Size (W x H)	304mm×230mm (11.97"×9.06")	354mm×278mm (13.94"×10.94")	411mm×325mm (16.18"×12.80")
	Box structure	Front panel: aluminum-magnesium alloy, anodized coating ;Back cover: SGCC, Ground isolation protection		
	Mounting	Support Embedded,wall-mounted,Desktop and VESA mounting		
	Power Supply	Phoenix terminal: DC 12~24V input		
	Power Dissipation	8W	10W	12W
	Signal input	VGA & DVI-D		
	Net Weight	2.34kg (5.16lb)	3.34kg (7.36lb)	4.34kg (9.57lb)
<b>LCD</b>	LCD Type	12.1" XGA TFT	15" XGA TFT	17" SXGA TFT
	Resolution	1024×768	1024×768	1280×1024
	Colors	16.7MB	16.2MB	16.7MB
	Active Area (W×H)	246mm×184mm (9.69"×7.24")	304mm×228mm (11.97"×8.98")	338mm×270mm (13.31"×10.63")
	Backlight	WLED	WLED	WLED
	MTBF (hour)	30000hrs	50000hrs	50000hrs
	Pixel Pitch (H×V)	0.240×0.240	0.297×0.297	0.264×0.264
	Luminance	350cd/m <sup>2</sup>	350cd/m <sup>2</sup>	350cd/m <sup>2</sup>
	Contrast Ratio	800 : 1	700 : 1	1000 : 1
	Viewing Angle	(L) 80 / (R) 80 / (T) 80 / (B) 80	(L) 80 / (R) 80 / (T) 80 / (B) 80	(L) 85 / (R) 85 / (T) 80 / (B) 80
<b>Touchscreen</b>	Touchscreen type	Multi-point capacitive touch screen		
	Transmittance	> 87%		
	Controller interface	USB		
	Driver Support	Windows7, Windws 8, Windows 10, Linux		
	Multi-touch	10 points (windows system)		
	Surface Hardness	Mohs' Hardness 7H		
<b>Environmental</b>	Work Temperature	-20 ~ 60°C (-4~140°F)(Wide temperature SSD) / 0 ~ 45°C (32~113°F)(General temperature HDD/SSD)		
	Storage Temperature	-30 ~ 80°C (-22~176°F)		
	Relative Humidity	5 ~ 95% RH@40°C (Non-condensation)		
	Vibration	Operating Random Vibration Test 5~500Hz, 1.5Grms@with SSD, follow IEC 60068-2-64		
	Shock	Operating 20G peak acceleration (11ms duration), follow IEC 60068-2-27		
	EMC	CE/FCC Class B		
	Water-proof	Front panel IP65		



Model No.	PANEL5000-C1852	PANEL5000-C192	PANEL5000-C2152	
<b>General</b>	Set Contrast ratio and Luminance via OSD at the back panel			
	Dimension (W×H×D)	480mm×304mm×47mm (18.90"×11.97"×1.85")	460mm×369mm×47mm (18.11"×14.53"×1.85")	550mm×342mm×47mm (21.65"×13.46"×1.85")
	Drill Hole Size (W x H)	463mm×287mm (18.23"×11.30")	442mm×351mm (17.40"×13.82")	533mm×325mm (20.98"×12.80")
	Box structure	Front panel: aluminum-magnesium alloy, anodized coating ;Back cover: SGCC, Ground isolation protection		
	Mounting	Support Embedded,wall-mounted,Desktop and VESA mounting		
	Power Supply	Phoenix terminal: DC 12~24V input		
	Power Dissipation	10W	14W	17W
	Signal input	VGA & DVI-D		
	Net Weight	4.6kg (1.014lb)	5.18kg (11.42lb)	5.56kg (12.26lb)
<b>LCD</b>	LCD Type	18.5" WXGA TFT	19" SXGA TFT	21.5" Full HD TFT
	Resolution	1366×768	1280×1024	1920×1080
	Colors	16.7MB	16.7MB	16.7MB
	Active Area (W×H)	409.8mm×230.4mm (16.13"×9.07")	376.3mm×301mm (14.81"×11.85")	476mm×268mm (18.74"×10.55")
	Backlight	WLED	WLED	WLED
	MTBF (hour)	50000hrs	30000hrs	50000hrs
	Pixel Pitch (H×V)	0.300×0.300	0.294×0.294	0.248×0.248
	Luminance	450cd/m <sup>2</sup>	250cd/m <sup>2</sup>	250cd/m <sup>2</sup>
	Contrast Ratio	1000 : 1	1000 : 1	1000 : 1
	Viewing Angle	(L) 85 / (R) 85 / (T) 80 / (B) 80	(L) 85 / (R) 85 / (T) 80 / (B) 80	(L) 89 / (R) 89 / (T) 89 / (B) 89
<b>Touchscreen</b>	Multi-point capacitive touch screen			
	> 87%			
	USB			
	Windows7, Windws 8, Windows 10, Linux			
	10 points (windows system)			
	Mohs' Hardness 7H			
<b>Environmental</b>	-20 ~ 60°C (-4~140°F)(Wide temperature SSD) / 0 ~ 45°C (32~113°F)(General temperature HDD/SSD)			
	-30 ~ 80°C (-22~176°F)			
	5 ~ 95% RH@40°C (Non-condensation)			
	Operating Random Vibration Test 5~500Hz, 1.5Grms@with SSD, follow IEC 60068-2-64			
	Operating 20G peak acceleration (11ms duration), follow IEC 60068-2-27			
	CE/FCC Class B			
	Front panel IP65			

## PANEL5000-DXX2 SERIES



Model No.	PANEL5000-D122	PANEL5000-D152	PANEL5000-D172	
<b>General</b>	Control button	Set Contrast ratio and Luminance via OSD at the back panel		
	Dimension (W×H×D)	321mm×247mm×47mm (12.64"×9.72"×1.85")	371mm×295mm×47mm (14.60"×11.61"×1.85")	428mm×342mm×47mm (16.85"×13.46"×1.85")
	Drill Hole Size (W x H)	304mm×230mm (11.97"×9.06")	354mm×278mm (13.94"×10.94")	411mm×325mm (16.18"×12.80")
	Box structure	Front panel: aluminum-magnesium alloy, anodized coating ;Back cover: SGCC, Ground isolation protection		
	Mounting	Support Embedded, wall-mounted, Desktop and VESA mounting		
	Power Supply	Phoenix terminal: DC 12~24V input		
	Power Dissipation	8W	10W	12W
	Signal input	VGA & DVI-D		
	Net Weight	2.95kg	3.34kg	4.34kg
<b>LCD</b>	LCD Type	12.1" XGA TFT	15" XGA TFT	17" SXGA TFT
	Resolution	1024×768	1024×768	1280×1024
	Colors	16.7MB	16.2MB	16.7MB
	Active Area (W×H)	246mm×184mm (9.69"×7.24")	304mm×228mm (11.97"×8.98")	338mm×270mm (13.31"×10.63")
	Backlight	WLED	WLED	WLED
	MTBF (hour)	30000hrs	50000hrs	50000hrs
	Pixel Pitch (H×V)	0.240×0.240	0.297×0.297	0.264×0.264
	Luminance	350cd/m <sup>2</sup>	350cd/m <sup>2</sup>	350cd/m <sup>2</sup>
	Contrast Ratio	800 : 1	700 : 1	1000 : 1
	Viewing Angle	(L) 80 / (R) 80 / (T) 80 / (B) 80	(L) 80 / (R) 80 / (T) 80 / (B) 80	(L) 85 / (R) 85 / (T) 80 / (B) 80
<b>Touchscreen</b>	Touchscreen type	Resistive touch screen		
	Resolution	4096×4096		
	Transmittance	> 75%		
	Controller interface	USB		
	Driver Support	Windows 7, Windows8, Windows10, Linux		
	Response Time (touch Pen)	< 5ms		
	Surface Hardness	Mohs' Hardness 3H		
	Click Life	250g / 35,000,000 times		
Draw life	250g / 5,000,000 times			
<b>Environmental</b>	Work Temperature	-20 ~ 60°C (-4~140°F)(Wide temperature SSD) / 0 ~ 45°C (32~113°F)(General temperature HDD/SSD)		
	Storage Temperature	-30 ~ 80°C (-22~176°F)		
	Relative Humidity	5 ~ 95% RH@40°C (Non-condensation)		
	Vibration	Operating Random Vibration Test 5~500Hz, 1.5Grms@with SSD, follow IEC 60068-2-64		
	Shock	Operating 20G peak acceleration (11ms duration), follow IEC 60068-2-27		
	EMC	CE/FCC Class B		
	Water-proof	Front panel IP65		

## Touch Screen Monitor

Complete specifications and categories



**Customized YOUR Panel Color Style**

# WP SERIES

WP Series IP69K Industrial Touch Monitor



WP waterproof products is designed for harsh environments with a high-strength 304 stainless steel housing that meets IP69K protection. It has the characteristics of waterproof, corrosion resistance, chemical resistance, detergent resistance, disinfectant resistance etc, and can be cleaned or sterilized with a high-pressure water gun during operation. It is widely used in harsh applications, like food processing, clinical, chemical, chemical or pharmaceutical fields.

All-in-one design, fully sealed enclosure, industrial grade touch screen, optional 15, 19 and 21.5 size, All interfaces are designed with M12 aerial plugs, which can prevent the entry of water vapor in humid environments. DC 12~24V with overcurrent, overvoltage and reverse connection protection measures. Standard VESA mounting ensuring easy and flexible installation in a variety of environments.



**Rugged IP69K stainless steel case**  
High-strength 304 stainless steel housing that meets IP69K protection.



**Fanless design**  
Fanless design but working temperature is -20 to 60 °C.



**Neutral front Panel**  
Neutral front panel design without logo, accept print logo service, as well as neutral packing optional.



**M12 waterproof plug**  
All interfaces use waterproof aviation plugs which are waterproof, corrosion-resistant, chemical-resistant, detergent-resistant, and disinfectant-resistant.



**Excellent touch accuracy**  
Touchscreen with water, dust, oil proof, click life is 50 million times.



**DC12V/24V Power input**  
DC 12V power input, optional DC24V, with surge power, over voltage and reverse polarity protection.



# WPXXXXP-R SERIES



Model No.	WP1501P-R	WP1901P-R	WP2151P-R	
<b>General</b>	Control button	-		
	Dimension (W×H×D)	360mm×284mm×58mm (14.17"×11.18"×2.28")	440mm×365mm×58mm (17.32"×14.37"×2.28")	540mm×332mm×59mm (21.26"×13.07"×2.32")
	Box structure	Stainless steel machine, drawing process		
	Mounting	Support VESA mountin		
	Power Supply	12~24VDC input		
	Power Dissipation	13.6W	18.4W	21.3W
	Signal input	HDMI		
<b>LCD</b>	LCD Type	15" XGA TFT	19" SXGA TFT	21.5" Full HD TFT
	Resolution	1024×768	1280×1024	1920×1080
	Colors	16.2MB	16.7MB	16.7MB
	Active Area (W×H)	304mm×228mm (11.97"×8.98")	376.3mm×301mm (14.81"×11.85")	476mm×268mm (18.74"×10.55")
	Backlight	WLED	WLED	WLED
	MTBF (hour)	50000hrs	30000hrs	50000hrs
	Pixel Pitch (H×V)	0.297×0.297	0.294×0.294	0.248×0.248
	Luminance	350cd/m <sup>2</sup>	250cd/m <sup>2</sup>	250cd/m <sup>2</sup>
	Contrast Ratio	700 : 1	1000 : 1	1000 : 1
	Viewing Angle	(L) 80 / (R) 80 / (T) 80 / (B) 80	(L) 85 / (R) 85 / (T) 80 / (B) 80	(L) 89 / (R) 89 / (T) 89 / (B) 89
<b>Touchscreen</b>	Touchscreen type	Resistive touch screen		
	Resolution	4096×4096		
	Transmittance	> 75%		
	Controller interface	USB		
	Driver Support	Windows 7, Windows8, Windows10, Linux		
	Response Time (touch Pen)	< 5ms		
	Surface Hardness	Mohs' Hardness 3H		
	Click Life	250g / 35,000,000 times		
Draw life	250g / 5,000,000 times			
<b>Environmental</b>	Work Temperature	-20 ~ 60°C (-4~140°F)(Wide temperature SSD) / 0 ~ 45°C (32~113°F)(General temperature HDD/SSD)		
	Storage Temperature	-30 ~ 80°C (-22~176°F)		
	Relative Humidity	5 ~ 95% RH@40°C (Non-condensation)		
	Vibration	Operating Random Vibration Test 5~500Hz, 1.5Grms@with SSD, follow IEC 60068-2-64		
	Shock	Operating 20G peak acceleration (11ms duration), follow IEC 60068-2-27		
	EMC	CE/FCC Class B		
	Water-proof	The whole machine IP69K		

# WPXXXXP-C SERIES



Model No.	WP1501P-C	WP1901P-C	WP2151P-C	
<b>General</b>	Control button	-		
	Dimension (W×H×D)	360mm×284mm×58mm (14.17"×11.18"×2.28")	440mm×365mm×58mm (17.32"×14.37"×2.28")	540mm×332mm×59mm (21.26"×13.07"×2.32")
	Box structure	Stainless steel machine, drawing process		
	Mounting	Support VESA mountin		
	Power Supply	12~24VDC input		
	Power Dissipation	13.6W	18.4W	21.3W
	Signal input	HDMI		
<b>LCD</b>	LCD Type	15" XGA TFT	19" SXGA TFT	21.5" Full HD TFT
	Resolution	1024×768	1280×1024	1920×1080
	Colors	16.2MB	16.7MB	16.7MB
	Active Area (W×H)	304mm×228mm (11.97"×8.98")	376.3mm×301mm (14.81"×11.85")	476mm×268mm (18.74"×10.55")
	Backlight	WLED	WLED	WLED
	MTBF (hour)	50000hrs	30000hrs	50000hrs
	Pixel Pitch (H×V)	0.297×0.297	0.294×0.294	0.248×0.248
	Luminance	350cd/m <sup>2</sup>	250cd/m <sup>2</sup>	250cd/m <sup>2</sup>
	Contrast Ratio	700 : 1	1000 : 1	1000 : 1
	Viewing Angle	(L) 80 / (R) 80 / (T) 80 / (B) 80	(L) 85 / (R) 85 / (T) 80 / (B) 80	(L) 89 / (R) 89 / (T) 89 / (B) 89
<b>Touchscreen</b>	Touchscreen type	Multi-point capacitive touch screen		
	Transmittance	> 87%		
	Controller interface	USB		
<b>Touchscreen</b>	Driver Support	Windows7, Windws 8, Windows 10, Linux		
	Multi-touch	10 points (windows system)		
	Surface Hardness	Mohs' Hardness 7H		
	Work Temperature	-20 ~ 60°C (-4~140°F)(Wide temperature SSD) / 0 ~ 45°C (32~113°F)(General temperature HDD/SSD)		
	Storage Temperature	-30 ~ 80°C (-22~176°F)		
	Relative Humidity	5 ~ 95% RH@40°C (Non-condensation)		
<b>Environmental</b>	Vibration	Operating Random Vibration Test 5~500Hz, 1.5Grms@with SSD, follow IEC 60068-2-64		
	Shock	Operating 20G peak acceleration (11ms duration), follow IEC 60068-2-27		
	EMC	CE/FCC Class B		
	Water-proof	The whole machine IP69K		